

For Sale

CHERRY VALLEY VACANT LAND

10357 Beaumont Ave, Cherry Valley, CA



NEWMARK

Property Features

- C-1/C-P (general commercial) zoned land on Beaumont Ave in Unincorporated Riverside County
- Just north of Beaumont High School and Interstate 10 Freeway
- Zoning allows for a multitude of commercial uses – inquire with listing agent for list of permitted uses



\$1,223,166

Sale Price



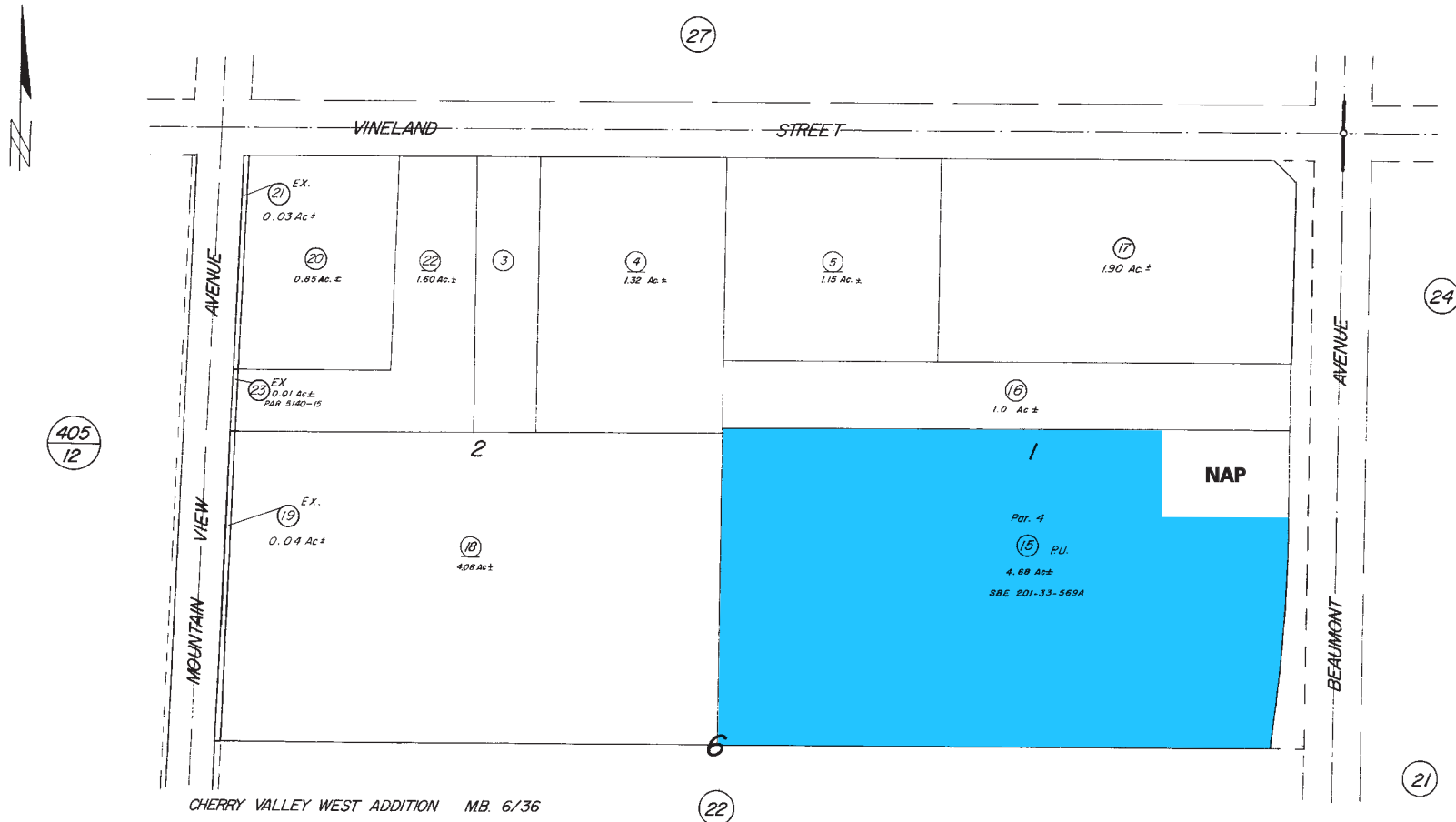
203,861 SF (4.68 AC)

Lot Size



403-230-015

APN





Vineland St

Vineland St

Vineland St

Vineland St

Friendship Dr

Beaumont Ave

Beaumont Ave

Avenida M

Goodie-Farm Organic

Springs Charter Schools (Cherry Valley...)

Grace Fellowship Church

Cherry Valley Brethren Church & Pre-School

L & G Fountains

Cherry Valley Feed Pet supply store

Belton Hearing Care Center Hearing aid store

Inner-City Auto Repair & Tires 3

El Charro Authentic Mexican Mexican • \$\$

Antonious Pizza Pizza • \$\$

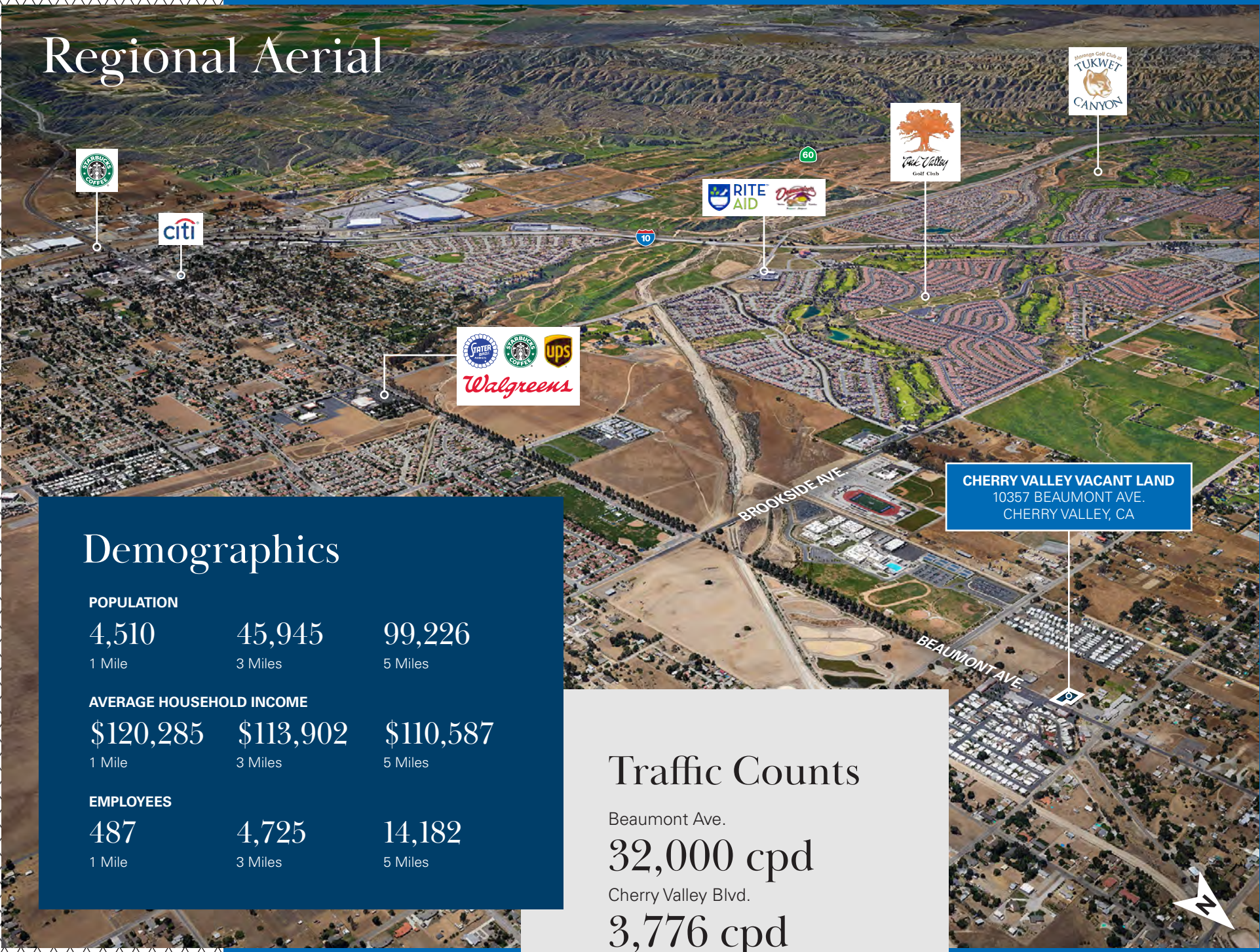
Two Ladd's Bakery

Ez Duz It Ranch Temporarily closed

NAP



Regional Aerial



Demographics

POPULATION

4,510

1 Mile

45,945

3 Miles

99,226

5 Miles

AVERAGE HOUSEHOLD INCOME

\$120,285

1 Mile

\$113,902

3 Miles

\$110,587

5 Miles

EMPLOYEES

487

1 Mile

4,725

3 Miles

14,182

5 Miles

Traffic Counts

Beaumont Ave.

32,000 cpd

Cherry Valley Blvd.

3,776 cpd

CHERRY VALLEY VACANT LAND
10357 BEAUMONT AVE.
CHERRY VALLEY, CA





NEWMARK

Exclusive Advisor

Pablo Rodriguez

Managing Director

t 213-340-5682

pablo.rodriguez@nmrk.com

CA RE Lic. #01870757

CORPORATE LICENSE #01355491

The information contained herein has been obtained from sources deemed reliable but has not been verified and no guarantee, warranty or representation, either express or implied, is made with respect to such information. Terms of sale or lease and availability are subject to change or withdrawal without notice.

DOWNTOWN LOS ANGELES

555 S Flower St, Suite 3550
Los Angeles, CA 90071