

FOR LEASE | 11,800 SF AVAILABLE

Diamond Crest Plaza

11828 SOUTH STREET | CERRITOS, CA



NEWMARK

DIAMOND CREST PLAZA

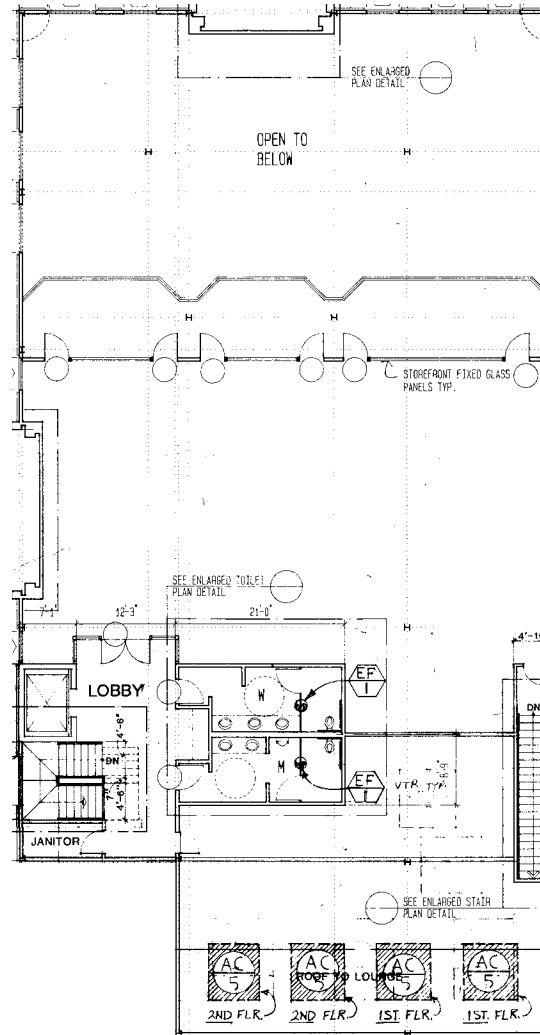
Property Features

- Up to 11,800 SF across Two levels – Can Demise
- Freestanding Pad Situated Along South St.
- Former Restaurant Building with Updated Equipment
- Can be converted into Medical Office
- Large Covered Parking with Direct Access to the Building
- Elevator Access from Parking to All Floors of the Building

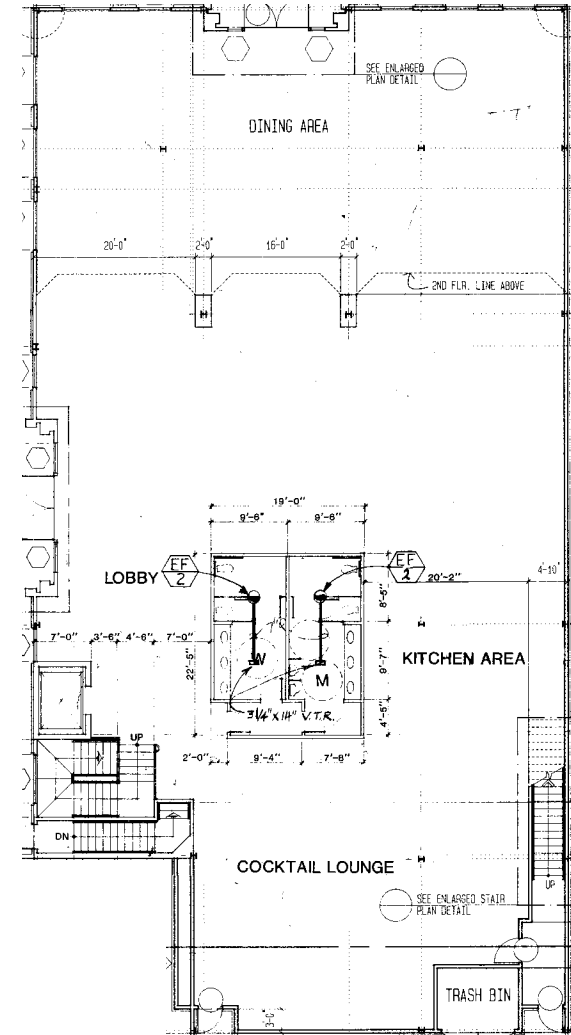
CONTACT

Peter Spragg
 t 213-298-3594
 peter.spragg@nmrk.com
 CA RE Lic. #01485613

SECOND FLOOR LAYOUT



FIRST FLOOR LAYOUT



DIAMOND CREST PLAZA



Demographics

Population

1 mile	26,248
3 miles	248,432
5 miles	627,633

Daytime Population

1 mile	12,438
3 miles	72,948
5 miles	238,886

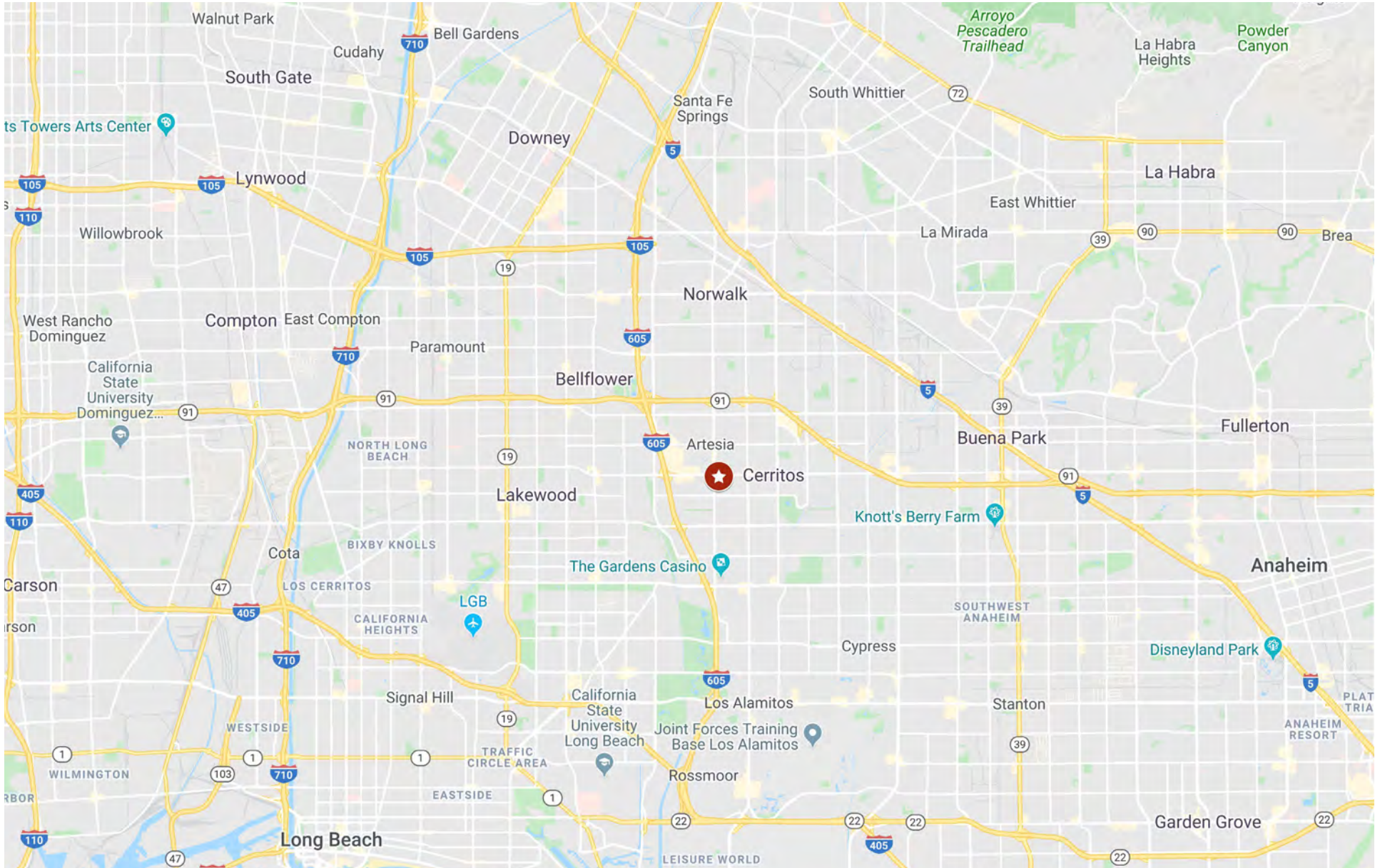
Average Household Income

1 mile	\$108,041
3 miles	\$102,423
5 miles	\$97,964

Traffic Counts

Elaine Ave.	27,158 cars per day
Alburtis Ave.	25,100 cars per day
Pioneer Blvd.	24,084 cars per day

DIAMOND CREST PLAZA



Diamond Crest Plaza

**11828 SOUTH STREET
CERRITOS, CA**

For More Information Contact:

Peter Spragg

Senior Managing Director

t 213-298-3594

peter.spragg@nmrk.com

CA RE Lic. #01485613

DTLA Office

700 S. Flower St, Suite 2500

Los Angeles, CA 90017

Corporate License #01355491

The information contained herein has been obtained from sources deemed reliable but has not been verified and no guarantee, warranty or representation, either express or implied, is made with respect to such information. Terms of sale or lease and availability are subject to change or withdrawal without notice.