

# THE PASEO

300 E. Colorado Blvd, Pasadena, CA 91101

QSR SPACES AVAILABLE NEXT TO NEW  
REGAL AND YARD HOUSE

3 QSR SPACES AVAILABLE

**NEWMARK**

**BRYAN NORCOTT**

*Executive Managing Director*

t 213-298-3595

bryan.norcott@nmrk.com

CA RE Lic: #1200077

**BILL BAUMAN**

*Vice Chairman*

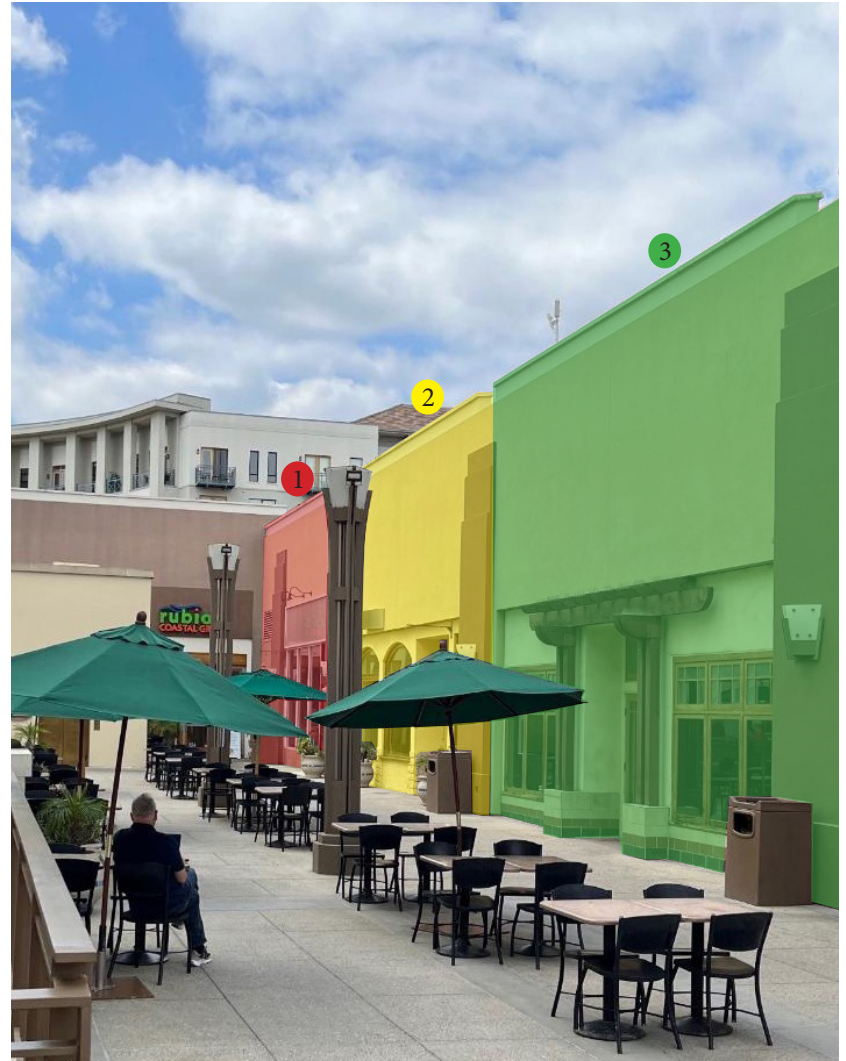
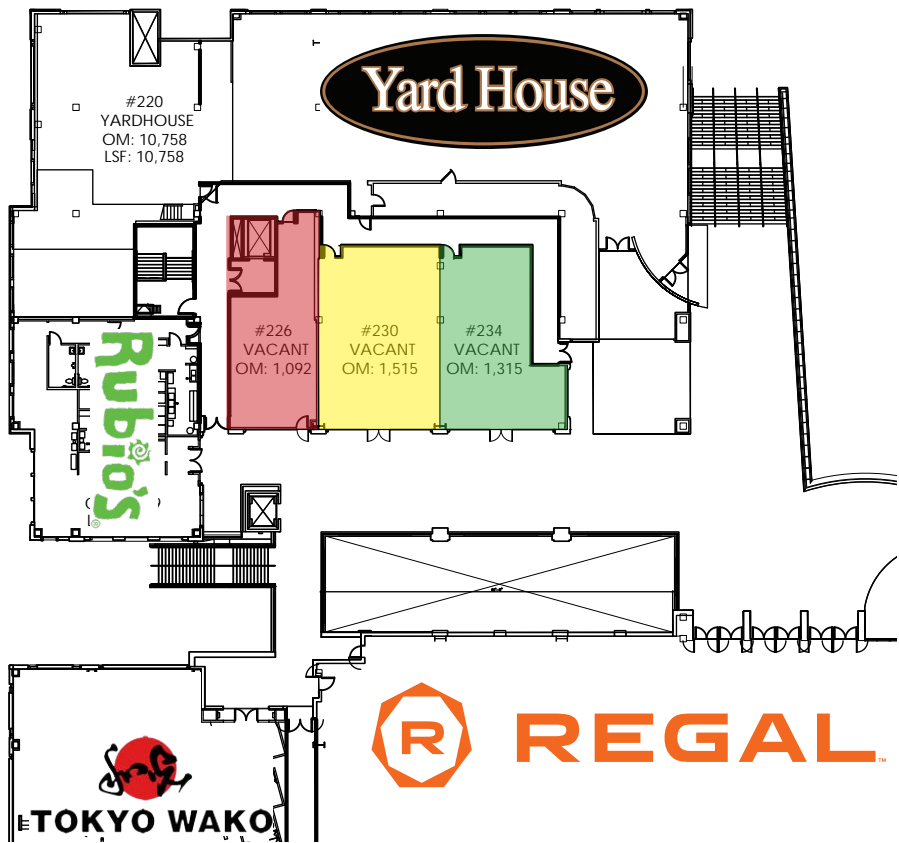
t 213-298-3593

bill.bauman@nmrk.com

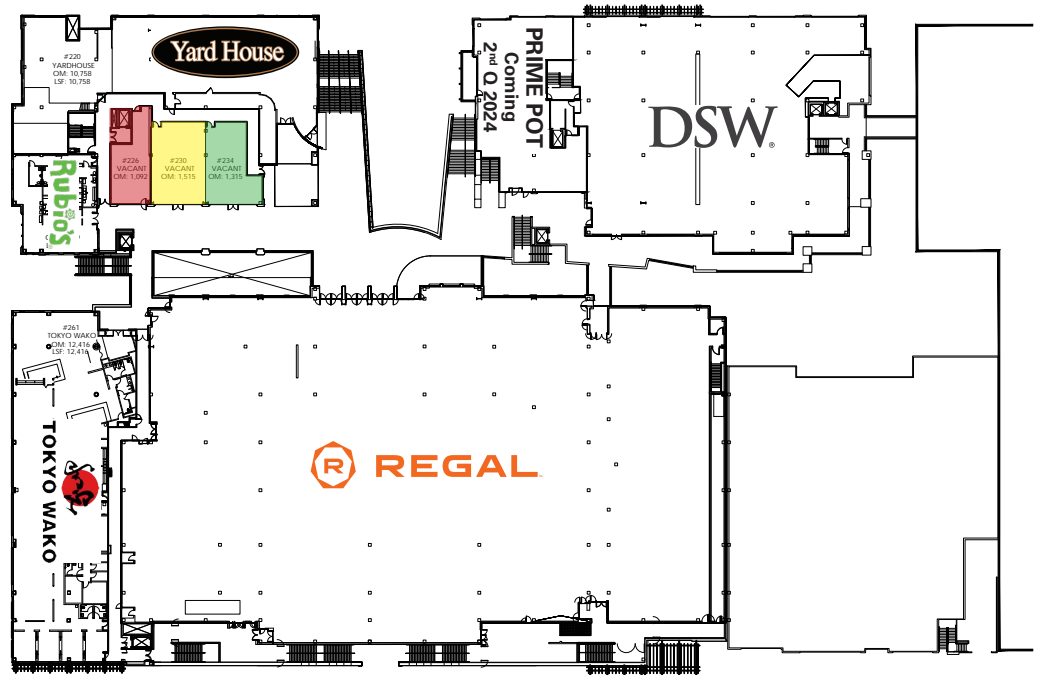
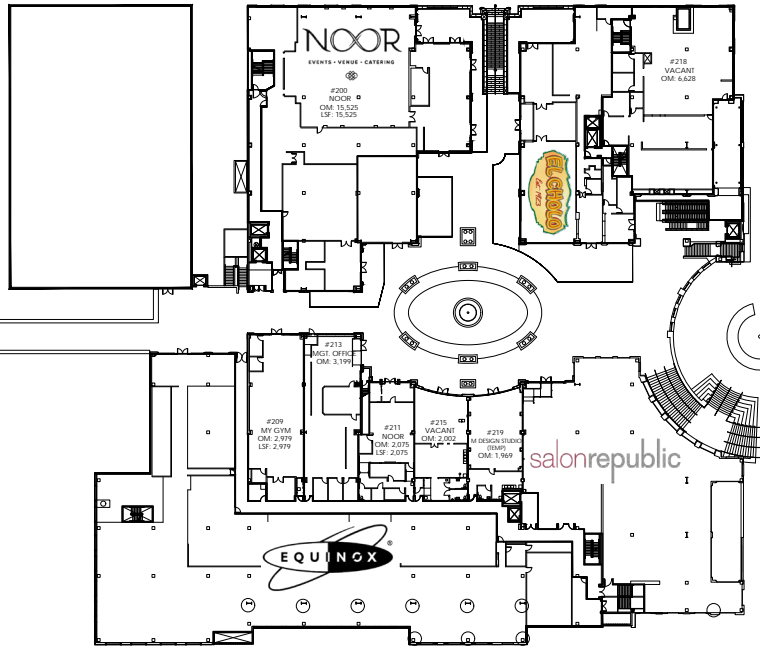
CA RE Lic: #00969493

# AVAILABLE SPACES

- 1 1,092 SF Available- Former Ms. Fields
- 2 1,515 SF Available- Former Restaurant
- 3 1,315 SF Available- Former Cold Stone



# FLOOR PLAN - LEVEL 2



# Upscale Outdoor Lifestyle Center Near Historic Old Town Pasadena

With 22 blocks designated as a National Register Historic District, Old Pasadena abounds with impeccably restored late 19th and early 20th-century architecture. "Old Pas," as locals affectionately call it, offers open-air shopping plazas, hidden laneways and a lively strip of retailers and restaurants along the main drag, Colorado Boulevard.





**LOCATION**

300 E. Colorado Blvd.  
Pasadena, CA 91101



**PROPERTY TYPE**

Shopping District/Outdoor  
Shopping Mall



**YEAR OPENED**

2001 as  
Paseo Colorado



**GROSS LEASEABLE  
AREA**

380,000 SF



**INTERSTATE  
ACCESS**

I-210



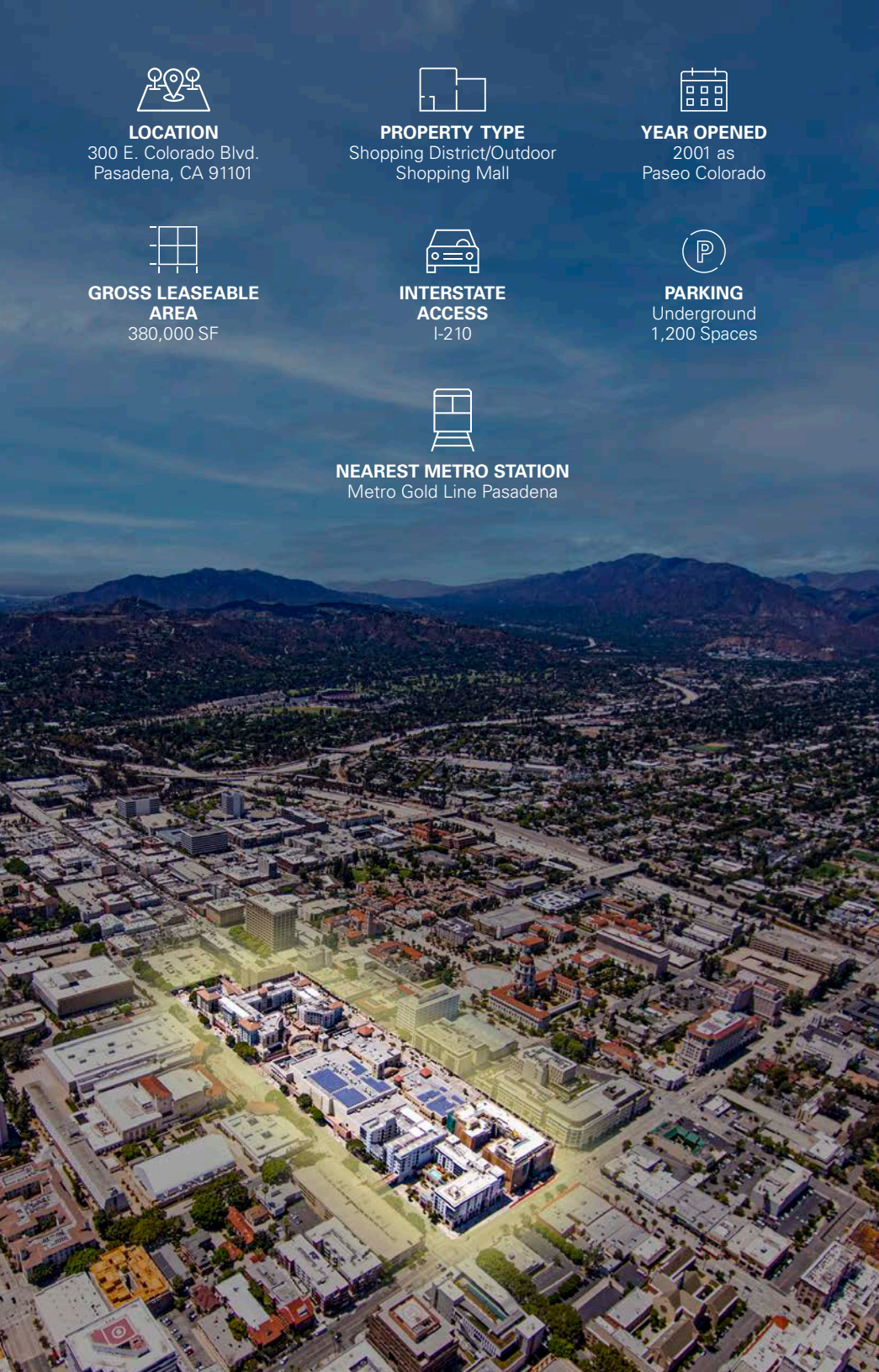
**PARKING**

Underground  
1,200 Spaces



**NEAREST METRO STATION**

Metro Gold Line Pasadena



# THE PASEO

**300 E. Colorado Blvd, Pasadena, CA 91101**

An open air marketplace  
featuring shops, dining  
and entertainment.

The Paseo is a mixed-use upscale outdoor lifestyle center near Historic Old Town Pasadena, which has seen several renditions of economic development since the late 1970s. At The Paseo, you'll find an urban shopping village in Pasadena's retail district anchored by Tommy Bahama, DSW Designer Shoe Warehouse, Equinox Health and Fitness, Yard House Restaurant, White House | Black Market, Bath and Body Works, Soma, West Elm and Chico's. New retailers which have recently opened include H&M, Great Maple, Salon Republic and Hyatt Place Hotel. Positioned directly across from Pasadena Civic Auditorium and Pasadena Conference Center, The Paseo also benefits from approximately 500,000 visitors and attendees as an added customer base throughout the year.

**427.2K**

Est. # of Customers

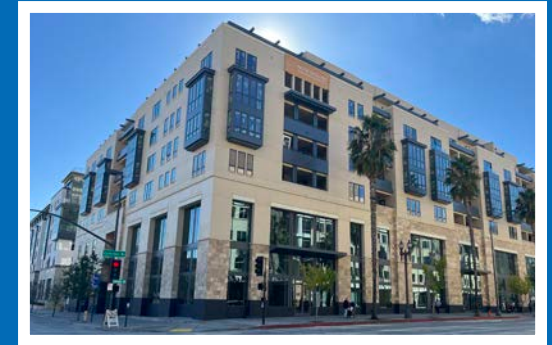
**854.6K**

Est. # of Visitors

**146 min**

Avg. Stay

DEMOGRAPHICS	POPULATION	EMPLOYEES	HH INCOME
1 MILE	38,342	87,705	\$107,666
3 MILES	194,538	138,126	\$131,343
5 MILES	516,308	224,650	\$122,673



**POPULATION**  
64,420



**HOUSEHOLDS**  
29,627



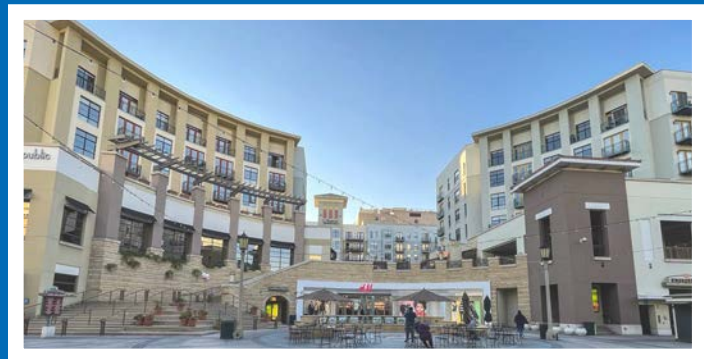
**FAMILIES**  
13,714



**MEDIAN AGE**  
36.5



**HH INCOME**  
\$123,853



DRIVE TIME (15 MIN.)	RESIDENTS	HH INCOME	EMPLOYEES
THE PASEO	885,106	\$107,192	429,454
DEL AMO FASHION CENTER	722,027	\$96,044	337,096
AMERICANA AT BRAND	867,685	\$85,937	464,558
GLENDALE GALLERIA	821,730	\$85,217	446,549
SOUTH COAST PLAZA	697,976	\$102,588	424,460



WHOLE FOODS  
Habit Burger Grill  
Marshalls HomeGoods  
FISH GRILL  
carter's babies and kids

SANTA ANITA PARK

HASTINGS RANCH

THE HOME DEPOT

PASADENA CITY COLLEGE

LAKE AVENUE RETAIL  
macy's TJ-maxx  
TRADER JOE'S ROSS PAVILIONS  
ANN TAYLOR  
Massage Envy  
STARBUCKS COFFEE

TRADER JOE'S rack OLD NAVY  
LA FITNESS BED BATH & BEYOND  
Panera Bread STONE ISLAND BEST BUY

Michaels

Office DEPOT

Urth Cafe

TARGET

Ralphs

PASADENA PLAYHOUSE

PASADENA ICE SKATING CENTER

WHOLE FOODS MARKET

PASADENA CONVENTION CENTER & CIVIC AUDITORIUM

HOUSTON'S

210

297000 CPD

ARROYO PKWY.

COLORADO BLVD.

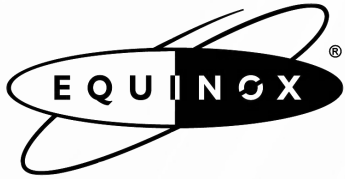


Less than a mile from OldTown Pasadena, this upmarket hotel on a tree-lined commercial street is 3 miles from the Rose Bowl stadium and 27 miles from Los Angeles International Airport.

189 rooms opened December 29, 2018 just before the Rose Parade. The hotel (former Macy's) is part of the Paseo Pasadena expansion.



# In Good Company



Tommy Bahama

Bath & Body Works

west elm



salonrepublic



Spectrum

NOOR

EVENTS • VENUE • CATERING



HYATT PLACE



DSW

Rubio's

Soma



# THE PASEO

**300 E. Colorado Blvd, Pasadena, CA 91101**

## FOR MORE INFORMATION:

### **BRYAN NORCOTT**

*Executive Managing Director*

t 213-298-3595

bryan.norcott@nrmk.com

CA RE Lic: #1200077

### **BILL BAUMAN**

*Vice Chairman*

t 213-298-3593

bill.bauman@nrmk.com

CA RE Lic: #00969493

### **DTLA OFFICE**

555 S. Flower St.

Suite 3550

Los Angeles, CA 90071

Corp. Lic: #01355491

The information contained herein has been obtained from sources deemed reliable but has not been verified and no guarantee, warranty or representation, either express or implied, is made with respect to such information. Terms of sale or lease and availability are subject to change or withdrawal without notice.



**NEWMARK**